

# 5P2R™

## Replacement Parts

Filters

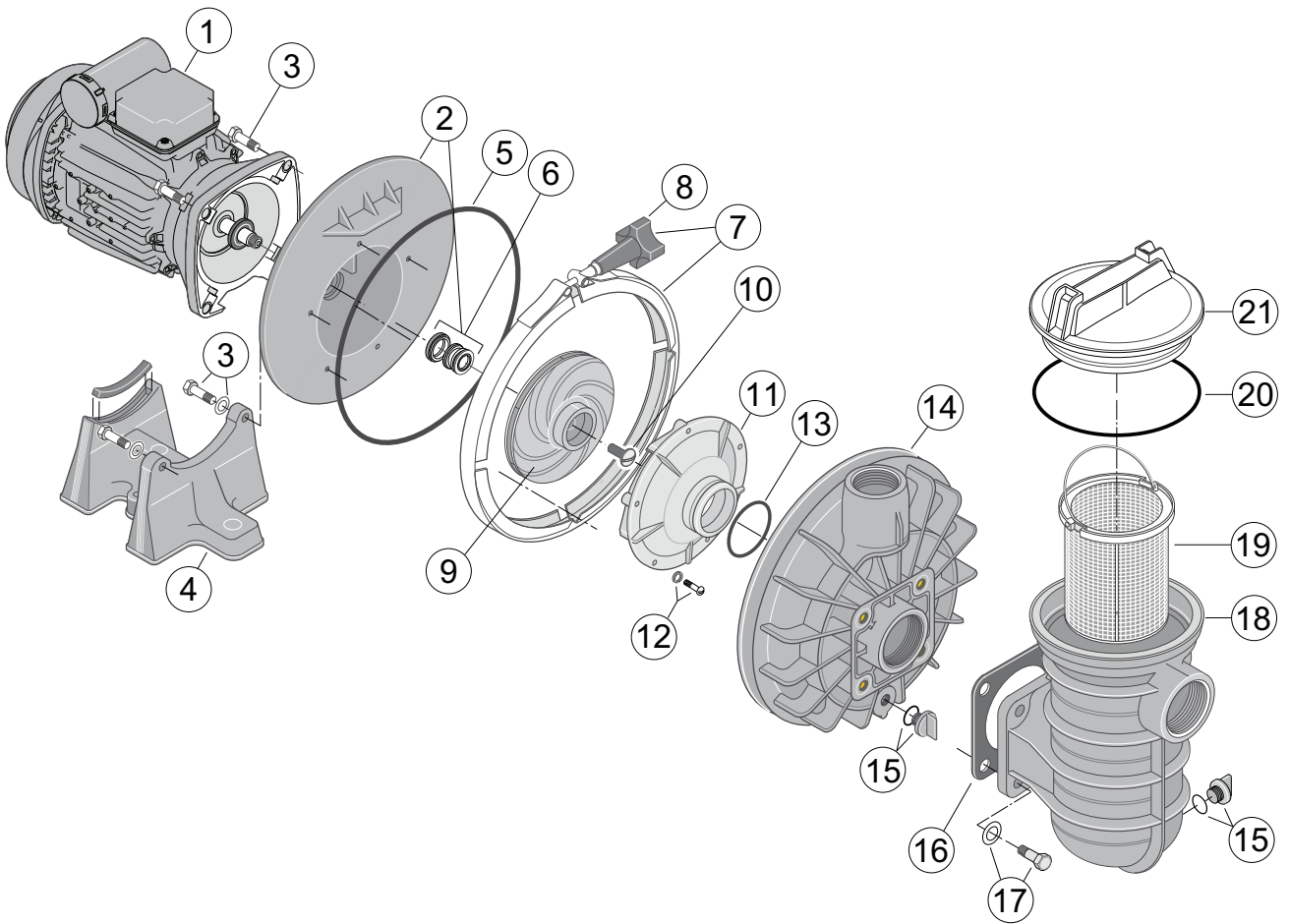
Filtration systems

Valves

Pumps

Motors

Cleaners



# 5P2R™

## Replacement Parts

No.	Part No.	Description	Part No.	Includes*
<b>1**</b>	RA-B1	Motor - Mono Phase 0,25KW		1
	RA-B3	Motor - Tri Phase 0,25KW		1
	RA-C1	Motor - Mono Phase 0,37KW		1
	RA-C3	Motor - Tri Phase 0,37KW		1
	RA-D1	Motor - Mono Phase 0,55KW		1
	RA-D3	Motor - Tri Phase 0,55KW		1
	RA-E1	Motor - Mono Phase 0,75KW		1
	RA-E3	Motor - Tri Phase 0,75KW		1
	RA-F1	Motor - Mono Phase 1,10KW		1
	RA-F3	Motor - Tri Phase 1,10KW		1
<b>2</b>	RC103193P	Seal Plate		1
<b>3</b>	RU3074SS	Bolts		4
<b>4</b>	RC442P	Base (0,25KW -> 0,55KW)		1
	RC441P	Base (0,75KW -> 1,10KW)		1
<b>5</b>	R39006000	O-Ring		1
<b>6</b>	R173040100S	Mechanical Seal		1
<b>7</b>	RC1937A	Clamp Assembly		1
<b>8</b>	RWC3622	Clamp Knob		1
<b>9</b>	RC10592B1	Impeller 0,25KW Mono Phase		1
	RC10592B3	Impeller 0,25KW Tri Phase		1
	RC10592C1	Impeller 0,37KW Mono Phase		1
	RC10592C3	Impeller 0,37KW Tri Phase		1
	RC105138D1	Impeller 0,55KW Mono Phase		1
	RC105138D3	Impeller 0,55KW Tri Phase		1
	RC105137E1	Impeller 0,75KW Mono Phase		1
	RC105137E3	Impeller 0,75KW Tri Phase		1
	RC105137F1	Impeller 1,10KW Mono Phase		1
	RC105137F3	Impeller 1,10KW Tri Phase		1
<b>10***</b>	RC3012	Impeller Lock Screw		1
<b>11</b>	RC1216P	Diffuser (0,25KW -> 0,37KW)		1
	RC1200PA	Diffuser (0,55KW -> 1,10KW)		1
<b>12</b>	RU30542SS	Bolts & Washers		3
<b>13</b>	RU9226	O-Ring		1
<b>14</b>	RC17647P1W	Volute		1
<b>15</b>	RU178920P	Drain Plug		2
<b>16</b>	RC20123	Square Gasket		1
<b>17</b>	RU3064SS	Bolts & Washers		4
<b>18</b>	RC15353P1W	Strainer Pot		1
<b>19</b>	RC10833P	Basket		1
<b>20</b>	RU9229	O-Ring		1
<b>21</b>	RC3139P1	Lid		1
	RC25353P1W	Pre-Filter (PN's 15, 18, 19, 20, 21)		
	PP1000	Seal Set (PN's 5, 6, 13, 16, 20) For pumps pre 4/2009 - Sealplate with Heatsink		
	PP1000S	Seal Set (PN's 5, 6, 13, 16, 20) For pumps installed after 4/2009 - Sealplate without heatsink		

\* PART NUMBER INCLUDES REQUIRED QUANTITY PER PRODUCT

\*\* SEE MOTOR SHEET FOR MOTOR SPARE PARTS

\*\*\* IMPELLER SCREW ONLY ON TRI PHASE PUMPS

Rev. 08/2010

Filters

Filtration  
systems

Valves

Pumps

Motors

Cleaners